

THE ROLLS-ROYCE "SILVER WRAITH"

A B R I D G E D



C A T A L O G U E

THE 25-30 H.P.

ROLLS-ROYCE

*"Silver Wraith"*

## F O R E W O R D

The post-war period inaugurates a new era, but the principles which underlie the production of Rolls-Royce cars remain unchanged. There is a tradition in the history of Rolls-Royce. It is a tradition of thorough British craftsmanship, pride in the highest skill of production and the utmost perfection in engineering workmanship. How far we have succeeded in the pursuit of this ideal is demonstrated in the "Silver Wraith." The "Silver Wraith" will be found to be wanting in nothing that has earned for the Rolls-Royce the title of "The Best Car in the World." Emphasis on tradition is not to deny the far-reaching effect of the wartime activities associated with the name of Rolls-Royce. Not a little of the merit of the "Silver Wraith" is attributable to that experience.



# A B R I D G E D   S P E C I F I C A T I O N

## ENGINE

Six cylinders with overhead inlet and side exhaust valves. Bore  $3\frac{1}{2}$  in., stroke  $4\frac{1}{2}$  in., capacity 4,257 c.c. R.A.C. rating 29·4.

## CARBURETTER

Down-draught aero type, with automatic mixture control for all conditions including cold starting.

## IGNITION

By battery and coil.

## COOLING SYSTEM

By fan and centrifugal pump. Thermostatically-controlled radiator shutters.

## CLUTCH

Single dry plate type.

## GEARBOX

Four speed and reverse, synchromesh on 2nd, 3rd, and 4th, which is direct drive. Right-hand control lever.

## SUSPENSION

Front — Independent, helical springs with hydraulic dampers. Rear — Semi-elliptic springs with hydraulic dampers, controllable by a lever on the steering column head.



# A B R I D G E D   S P E C I F I C A T I O N

## BRAKES

Mechanical at rear, hydraulic at front. Operation assisted by mechanical servo mounted on the side of the gearbox. Hand-brake supplements operation of rear brakes.

## CHASSIS LUBRICATION

Centralised system supplied by reservoir and pedal-operated pump mounted on dash panel. System includes front and rear suspension.

## PETROL SUPPLY

18 gallons. Twin electric pumps. Fuel gauge on instrument panel, and warning light which operates when fuel is low.

## JACKING SYSTEM

Side jacking system, the jack operating in a bracket on the frame side member in the centre of the chassis.

## TYRES

6.50 in. on 17 in. disc wheels.

## DIMENSIONS

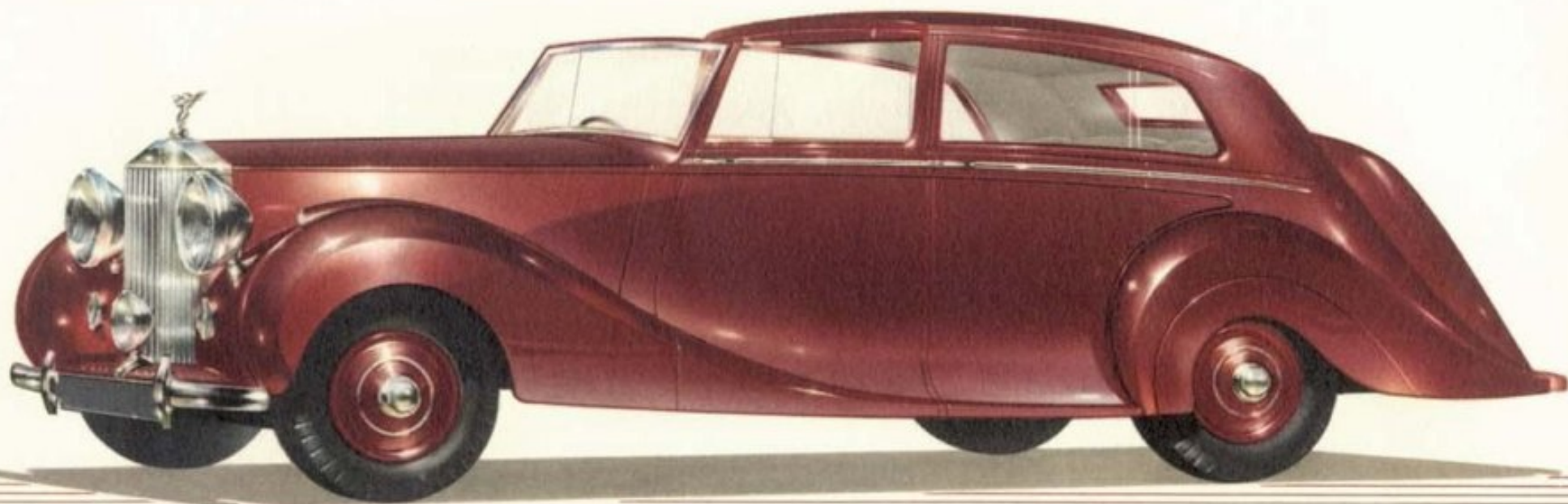
Wheelbase	=	10 ft. 7 ins.
Front Track	=	4 ft. 10 ins.
Turning Circle	=	45 ft.

## EQUIPMENT

Interior heating, de-froster and de-mister and radio are included in the equipment.

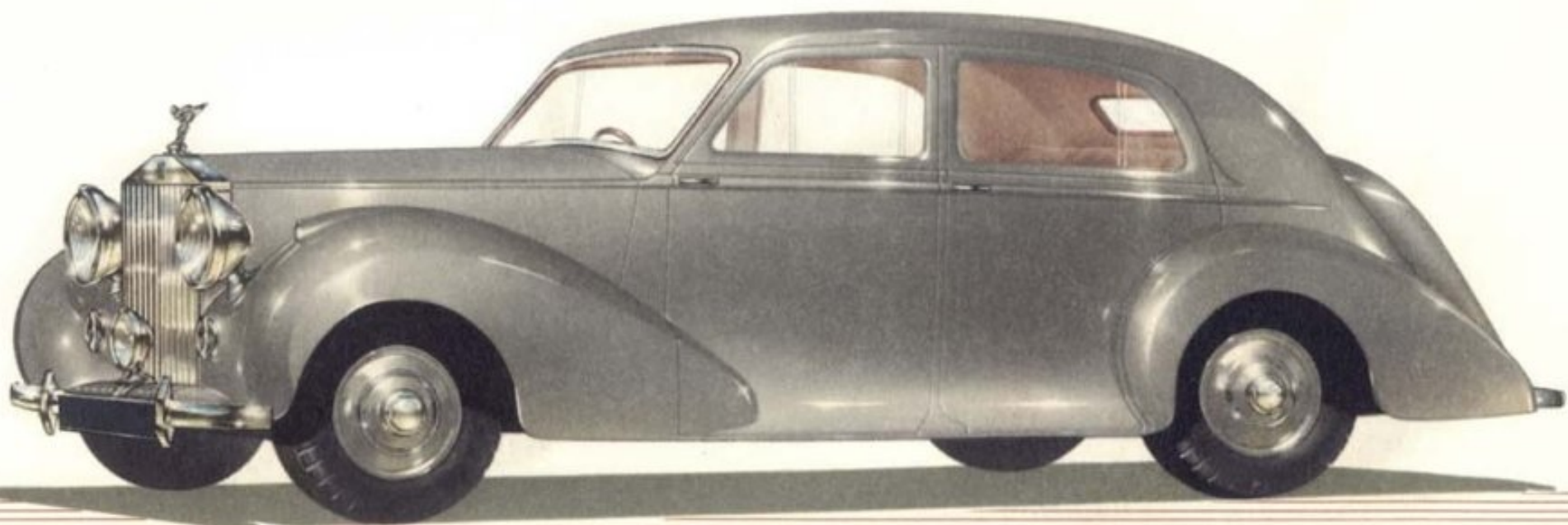


ROLLS-ROYCE *"Silver Wraith"* SEDANCA DE VILLE  
COACHWORK BY MESSRS. H. J. MULLINER & CO. LTD.

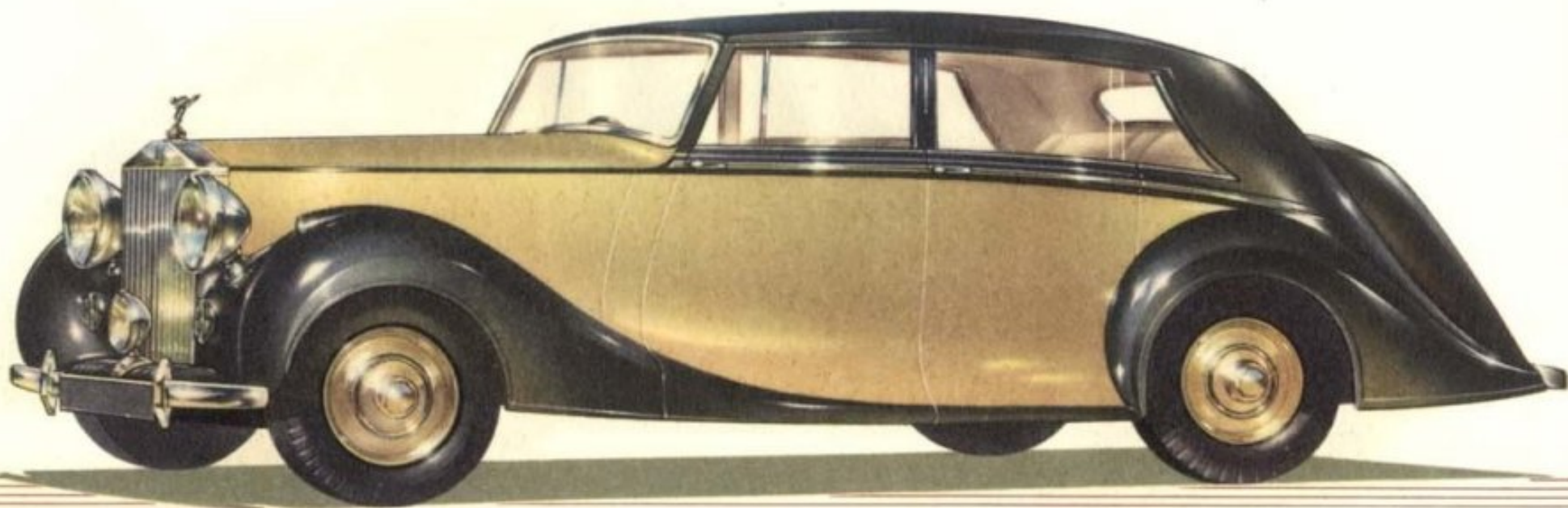


ROLLS-ROYCE *"Silver Wraith"* SPORTS SALOON

COACHWORK BY MESSRS. PARK WARD & CO. LTD.

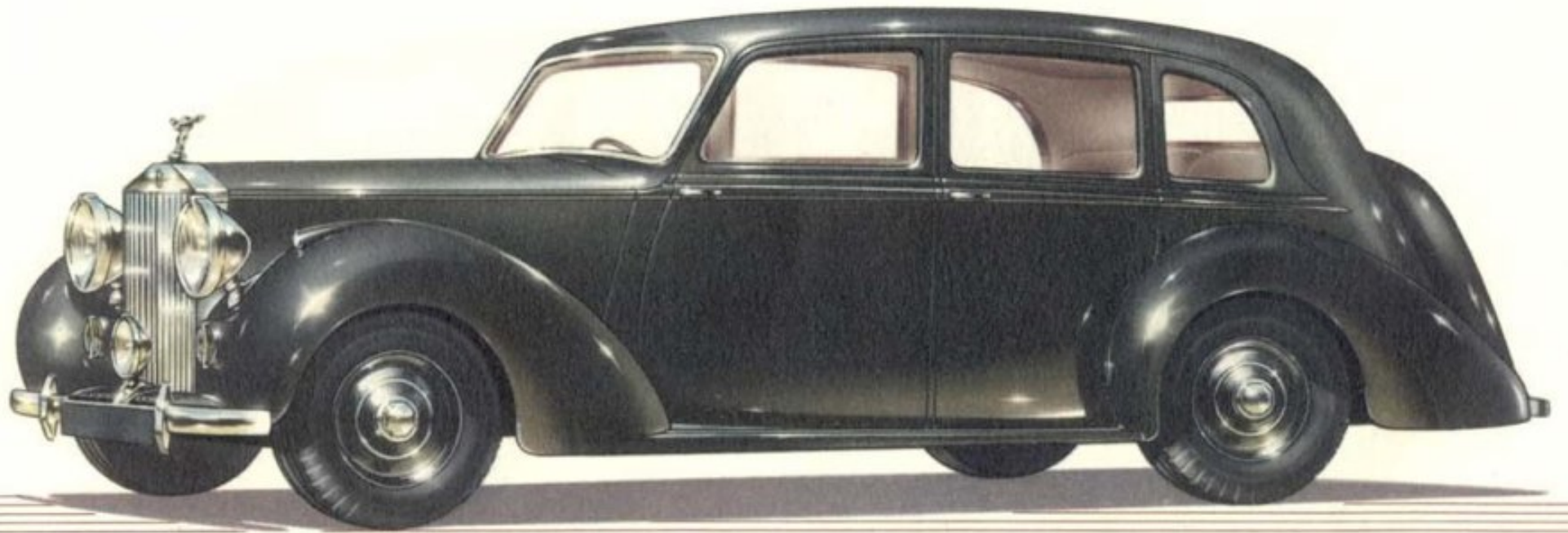


ROLLS-ROYCE *"Silver Wraith"* TOURING LIMOUSINE  
COACHWORK BY MESSRS. HOOPER & CO. LTD.





ROLLS-ROYCE *"Silver Wraith"* ENCLOSED LIMOUSINE  
COACHWORK BY MESSRS. PARK WARD & CO. LTD.



# PRICES

## CHASSIS £2055

4 light Sports Saloon (coachwork by Park Ward & Co. Ltd.)	£3590	Purchase Tax £997 19 6
Enclosed 7 Passenger Limousine (coachwork by Park Ward & Co. Ltd.)	£3780	Purchase Tax £1042 8 4
Sedanca de Ville (coachwork by H. J. Mulliner & Co. Ltd.)	£3875	Purchase Tax £1077 2 9
Touring Limousine (coachwork by Hooper & Co. Ltd.)	£3900	Purchase Tax £1084 1 8

## COLOUR SCHEMES

Black, with Brown, Grey, Blue or Beige furniture hide.  
Maroon, with Maroon or Beige furniture hide.  
Dark Blue, with Brown or Blue furniture hide.

Pearl (metallic finish) with Blue furniture hide.  
Fish silver (metallic finish) with Grey furniture hide.  
Mistletoe Green (metallic finish) with Beige furniture hide.  
Two-tone Grey, with Blue furniture hide.

Quotations can be supplied for bodies of other designs to suit customers' special requirements. Conditions of Guarantee and Terms of business may be obtained from the manufacturers.

The specification, prices and details contained in this catalogue are subject to alteration without notice.

As from June 18th, 1947 the Purchase Tax figures shown on this page should be doubled.