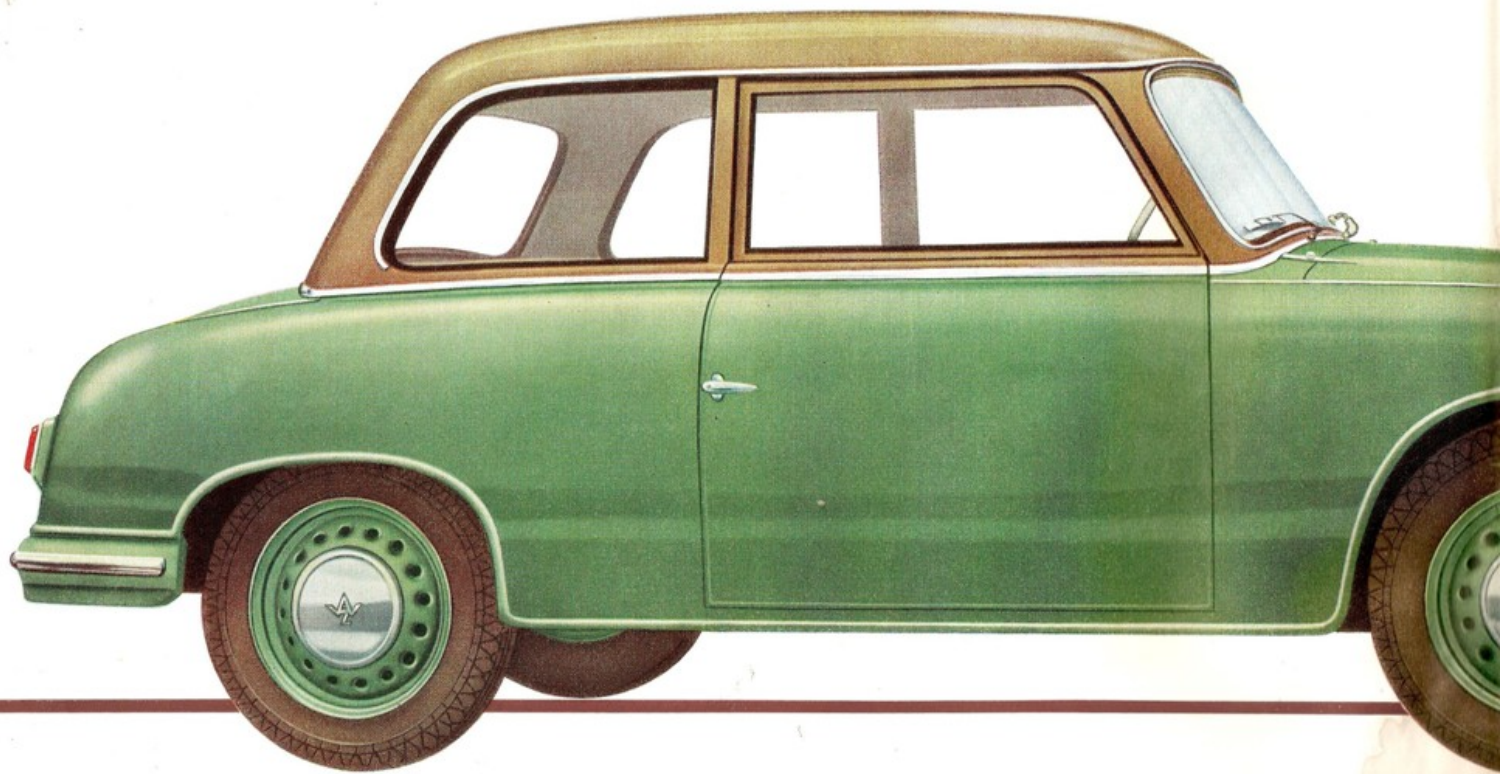




TYP *P70*
ZWICKAU



TYPE

P 70

ZWICKAU *Elegance-Smartness-Spaciousness*

provided with air heating equipment, defrosting nozzle and provisions for the installation of an auto-super.

The Type P 70 incorporates the results of ceaseless research and many years of practical experience. Representing the modern reconstruction of the well-known F-8 Car, the Type P 70 is equipped with a sturdy two-stroke two-cylinder motor of increased power output, resulting in correspondingly increased acceleration and power reserves. Modern production methods, perfect workmanship and high-grade materials of construction ensure absolute travelling safety and unexcelled travelling qualities. However, the novel and special features of this new type of car are its completely changed front view and the new principles of designing the spacious interior of the car with its unrestricted view towards all sides. The Type P 70 represents the first German type of automobiles constructed entirely with plastics bodies. The plastic material used for this purpose has been created and tested during years of scientific and experimental research and is now taking a leading position in modern automobile construction. Although of light weight, it is highly shock resistant, proof against vibrational stresses, highly elastic and corrosion resistant; it is also characterized by unusual heat insulating properties during all seasons of the year. We hope that in developing this new type of car we have fulfilled the wishes of all our friends at home and abroad.



SEVEN SIGNIFICANT FEATURES CHARACTERIZING THE NEW TYPE "P 70 ZWICKAU"

The Pontoon Car Body	provides additional interior space and more comfortable seating conditions. Large-sized windows. Excellent vision and light conditions in the rear of the car. Window area larger by 45% than that of the car Type F 8.
The Plastics Car Body	ensures improved corrosion and wear resistance as well as high heat insulating capacities. Excellent sound absorption. High degree of elasticity of the body structure and no distortion or warping due to light jolts and collisions. Easy repairing methods.
The improved arrangement of the front driving gear block ahead of the front axle	offers shortening of the wheel base by 220 mm (8.7") as against that of the car Type F 8. Improved travelling properties due to new arrangement of spring gear. Uniform front and rear axle pressures under normal load conditions.
Increased motor capacity 22 HP	offers Reduction of gear ratio from 6.1 to 5.8, inducing lower piston velocity and a motor speed reduction of 5% at a travelling speed of 80 km/hr (50 mi./hr.) Improved acceleration due to an engine torque increase of 10%. DYNA-starting equipment (12 V), ensuring easy starting even at lowest freezing temperatures.
Spare wheel carrier beneath the rear of the body	ensures easy accessibility of spare wheel from the outside.
The travelling gear	maintains the approved basic construction principles of the Type F 8.
High degree of economy	due to low fuel consumption as well as minimum cost of upkeep and maintenance.

TECHNICAL DATA

Mode of operation:
Three-port two-stroke motor,
with reverse scavenging

Cylinders:
2 cylinders in-line,
transverse arrangement
cylinder bore 76 mm (3")
stroke 76 mm (3")
swept volume 690 cm³
(42 cu. in.)

Gearing:
Three-speed gear with
reverse and free wheel gear
Engine capacity 22 HP
Compression ratio 1 : 6.8
Driving gear bearings
Rolling bearings

Lubricants:
Oil-gasoline mixture 1 : 25

Lighting equipment:
Dynamo, Dynastart, 12 V,
150 W, starter Dynastart

Cooling equipment:
Thermosyphon
Amount of cooling water:
6 l (1.3 imp. gall.)

Motor suspension:
Two-point rubber suspension

Clutch:
Multiple disk clutch
operating in oil

Speed reduction:
1. speed 3.44
2. speed 1.69
3. speed 1
axle reduction 1 : 5.8

Differential:
Spur wheel differential

Driving joints:
Rubber joints inside, metallic
wide-angle joints outside

Spring gear Cross springs
in front and rear

Axles:
Interdependent front wheel
steering requiring no maintenance,
with floating rear axle

Wheels:
Four-hole disc wheels
rims 3.25 D×16
tires 5.00-16

Right of modifications reserved

Wheel brakes: Mechanical
Duplex four-wheel brake,
with hand brake acting on
the rear wheels

Lubrication of Travelling
frame: High pressure
lubrication acting on all
lubricating points

Principal dimensions:
Gauge, front 1190 mm (46.9")
gauge, rear 1200 mm (47.2")
wheel base 2380 mm (93.7")
total length, abt. 3740 mm (147")
total width, abt. 1500 mm (59")
Height, abt. 1430 mm (56")
total weight, abt. 1120 kg (2470 lb.)
useful load, abt. 320 kg (705 lb.)
front wheels
toe-in 0+2 mm (1/16")
tilt 2° = 3.5 %
turning radius abt. 5 m (16.5 ft.)
maximum speed abt. 90 km/hr.
(abt. 55 mi./hr.)
standard fuel consumption:
7 l/100 km (2.5 imp. gall./100 mi.)

VEB AUTOMOBILWERK AWZ · ZWICKAU / SAXONY

TYP
P 70
ZWICKAU