

GENERAL INFORMATION

TECHNICAL SPEC

**ROBUST
STRONG
AGILE**



XAVANTE X-12





Construction Works

Surveying the work sites, it offers a strong performance as well as being comfortable, economic and resistant.



Farming Communities

It is a great help to the farmers in crossing farmlands as well as rough ground to keep up with their herds and harvests.

Also useful for transporting vets, farming technicians and equipment.



Inspectors

Whatever ground has to be covered, the XAVANTE X-12 will easily carry technicians to remote and difficult access sites.

Every XAVANTE X-12 comes equipped with a front winch and a folding spade, which offer still more security in whatever adverse situation may arise.



Roads And Highways

In building highways for normal cars, the XAVANTE X-12 makes its own road, always guaranteeing comfort, economy and durability to the engineers it carries.

GENERAL INFORMATION

Since 1969, GURGEL has projected, developed and manufactured Brazilian vehicles using the Volkswagen engine and transmission.

The name XAVANTE (pronounced SHA-VAN' - TEE) is derived from the primitive and brave Brazilian tribe of Indians who are robust, self-reliant and intelligent - quick to react to the unpredictable forces of Nature.

The XAVANTE X-12 is the most highly tested of the class of utility models.

Projected to adapt to the standards and demands of modern way of life, with clean lines and equipped with a VW motor of 1,600 cc, 60 HP, it surpasses all other models.

It has been tested exhaustively off-road, emerging with flying colours as a versatile, robust, agile, comfortable and economic vehicle.

Its excellent performance allows it to climb the steepest slopes with rock-like stability and road-holding. It has been successfully tested on the Army's testing grounds and is currently used by the Armed Forces in Brazil and other countries, agricultural institutes, engineers on the Transamazonica, sugar-mills, or farms, by sanitation services, governmental reforestation services as well as by firefighting units.

Since it is a relatively light vehicle (only 760 kilos or approximately 1,700 lbs), petrol consumption is 50% less than that of similar units.

On the road the XAVANTE X-12 is a recreational vehicle with an economic consumption of 11 Km per liter. Even under adverse conditions such as mud, sand or steep hills consumption is relatively low.

TECHNICAL SPECS

MODEL: XAVANTE X-12

ENGINE:

Rear mounted 1600 cc, 60 HP
Volkswagen engine.

TRANSMISSION:

4 - speed synchronized forward transmission, and one reverse. Heavy-duty clutch.

BRAKES

Front and rear, hydraulic drum service brakes. Mechanic parking-brake on the rear wheels.

SELETRACTION

The XAVANTE X-12 does not have 4-wheel drive; it does not need it, for it is equipped with **SELETRACTION (R)**. SELETRACTION is a device that allows the driver to select the proper gripping in the rear wheel, **left or right**, in case one of them loses complete traction and mobility power. By just pushing one of the two command sticks located right of the drivers seat, the driver is able to transfer gripping traction power from the wheel that is spinning to the other one.

Also, SELETRACTION reduces to a minimum the turning circle (normally 950 cm) by making the car spin in a very closed and sharp way.

SUSPENSION:

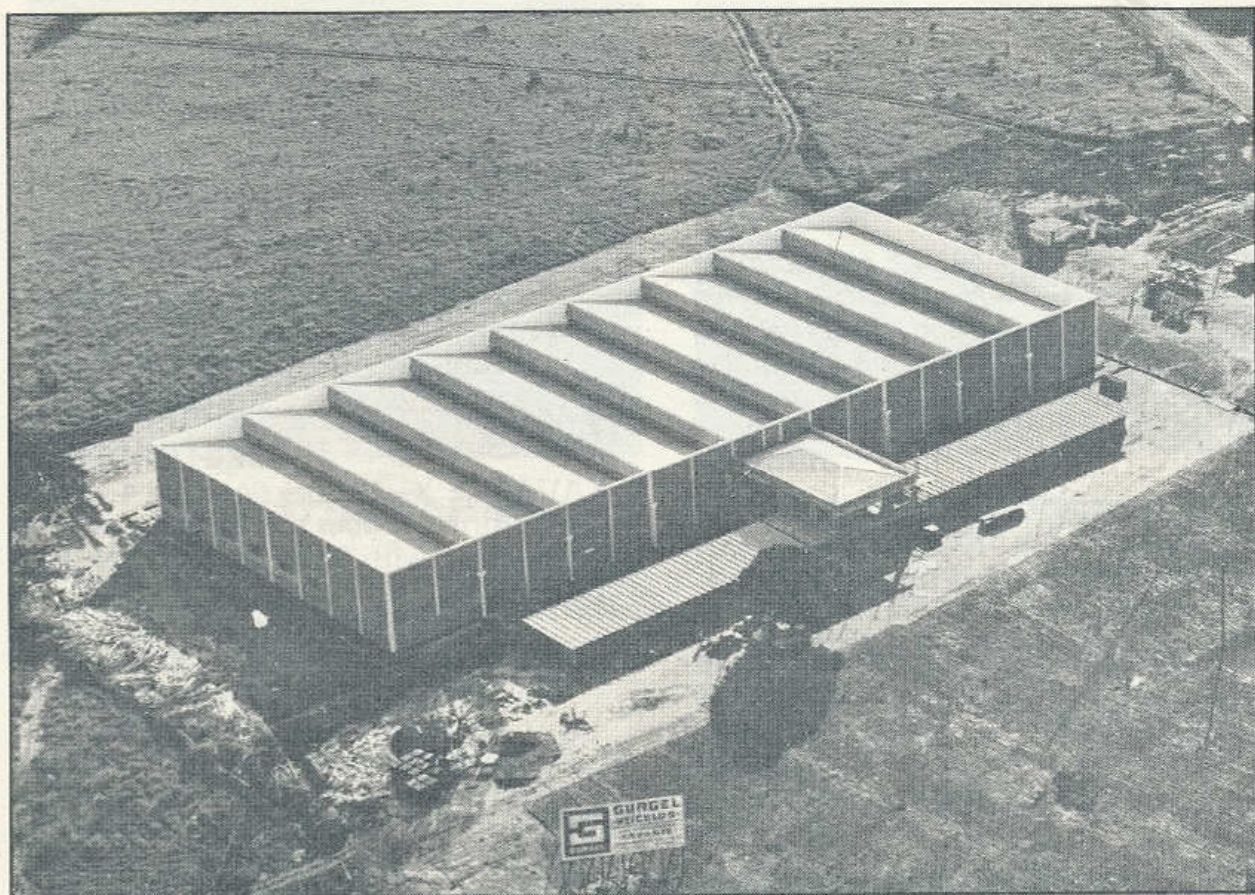
Independent in all 4 wheels.

Front & rear hydraulic shock-absorbers. Front suspension with torsion bars and helical springs at the rear.

STANDARD EQUIPMENT

- Seletraction -
- Heavy-duty all-purpose canvas top -
- Inside mounted windshield wiper motor -
- Steel headlamps protector -
- Mechanical winch with 25 m cable -
- Skid plate -
- Plate protector for engine and transmission -
- Safety belts -
- Heavy-duty roll bar -
- Vynil foam-cushioned bucket seats -
- Side-door mounted spade -
- Fire extinguisher -
- Weather-proofed instrument panel -
- Dual-padded sun visors -
- Passenger grab handle -
- Outside low-profile rear-view mirror -

This is the new GURGEL factory. Here are produced the new XAVANTES which are each subjected to a rigorous quality control check before leaving, in order to guarantee a continued high level of quality and performance for the satisfaction of the customer



XEKMAT 63-7313

GURGEL S.A. INDÚSTRIA E COMÉRCIO DE VEÍCULOS

Avenida Cursino, 2518
04132 São Paulo - Brazil

Telephone: (011) 276-3611
Cables: GURGELCAR — SÃO PAULO

