

fiat 2300  
fiat 1800 B

The six-cylinder Fiats

## the six-cylinder Fiats

The latest developments in structure and performance have been incorporated in the six-cylinder Fiats, notably the **2300** and the **1800 B**.

The **Fiat 2300** is a high-quality car. A luxury vehicle equipped with the most modern technical devices, it has an engine which enables a speed of about 100 m.p.h. (160 km p.h.) to be obtained with maximum safety. Of still greater distinction is the **special saloon**, a luxurious car for ceremonial occasions.

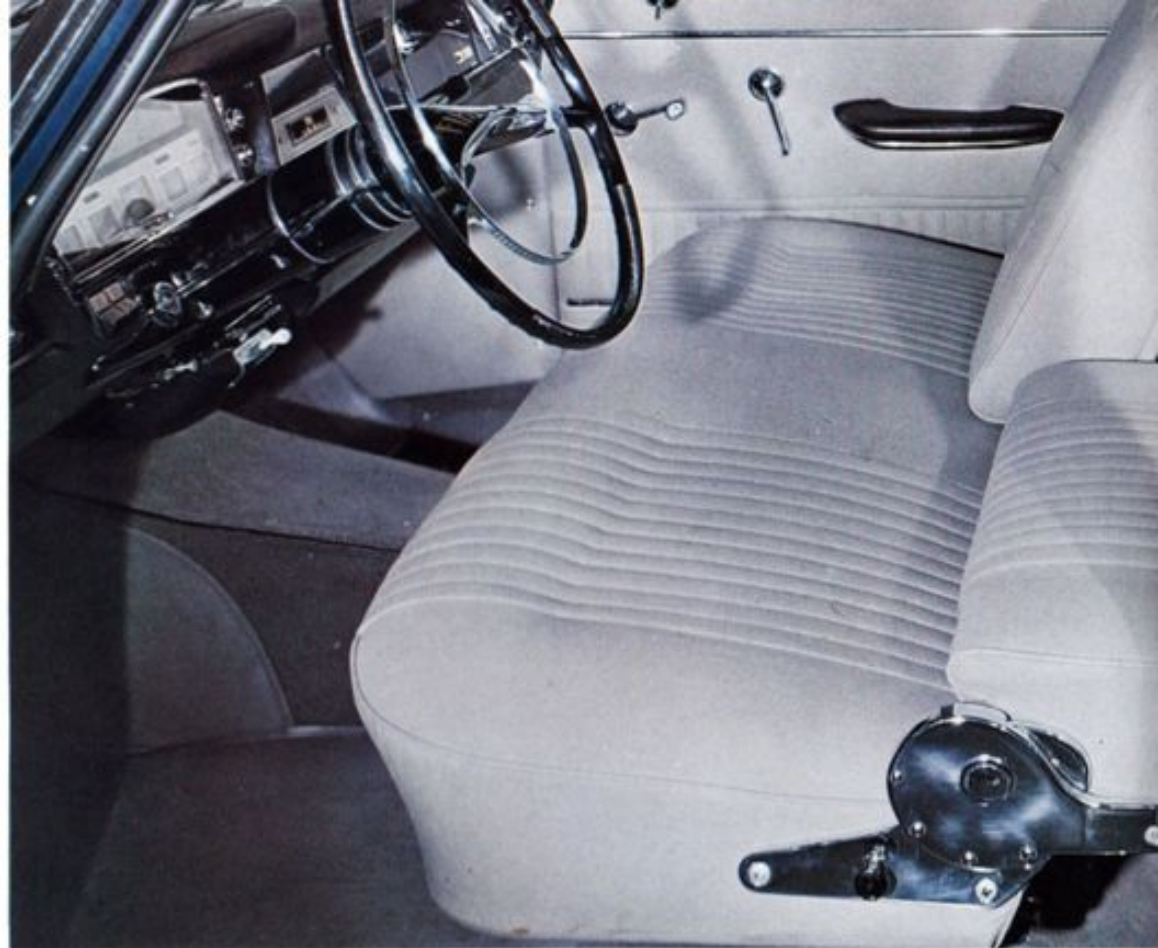
The **1800 B** is a development of the 1800 with an improved engine and more comfortable body-work.

Both models are equipped with disc brakes actuated through a vacuum-operated servomotor.

## the 2300 saloon







## a luxurious car

The front seat has twin reclining back-rests which can be folded flat; individual seats are available on request. The rear seat is equipped with a central armrest. Interior spaciousness has been improved: more room for rear passengers.

Courtesy switches are provided on all four doors.





Four headlights with asymmetrical anti-dazzle beams for safe night driving.





Ample luggage capacity. The spare wheel, located horizontally beneath the floor, occupies no space which might be used for carrying luggage.



### lavish equipment

Instrument panel of new design. Additional to the standard range of instruments and accessories; trip mileage recorder, oil pressure gauge, water temperature gauge, electric clock, warning lights for choke and for hand-brake, rheostatic control of instrument lighting, electric cigarette lighter, foot-operated screen washers and large wipers which clean the entire wind-screen.

Padded dashboard—parcel tray under the dashboard—glove box with automatic interior light.



Among other accessories, the 2300 is also equipped with two adjustable vents located on the extreme edges of the dashboard, for demisting the side windows.

Safety handles on the doors obviate the possibility of accidental opening. Fully upholstered arm-rests are provided on all four doors.



Glass draught deflector in front door, operated by wing-nut.



Front doors are locked by push buttons.

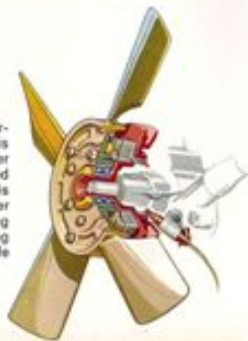




## engine

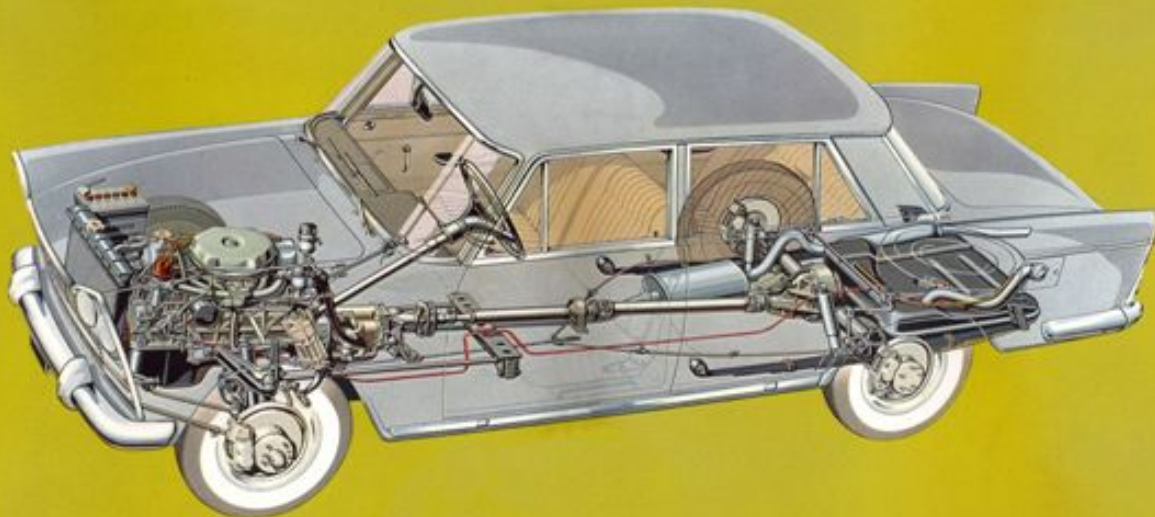


An engine providing lively acceleration and high performance: a 6-cylinder with a power output of 117 SAE b.h.p. capacity 2,279 c.c., compression ratio 8.8:1.



Engine cooling incorporating a thermostatically controlled fan which is automatically energized when the water temperature reaches a predetermined level. By this means, fuel economy is improved, the noise level is further reduced and by enabling the cooling system to reach its optimum operating temperature more rapidly, engine life is extended.

## structure and components of the 2300



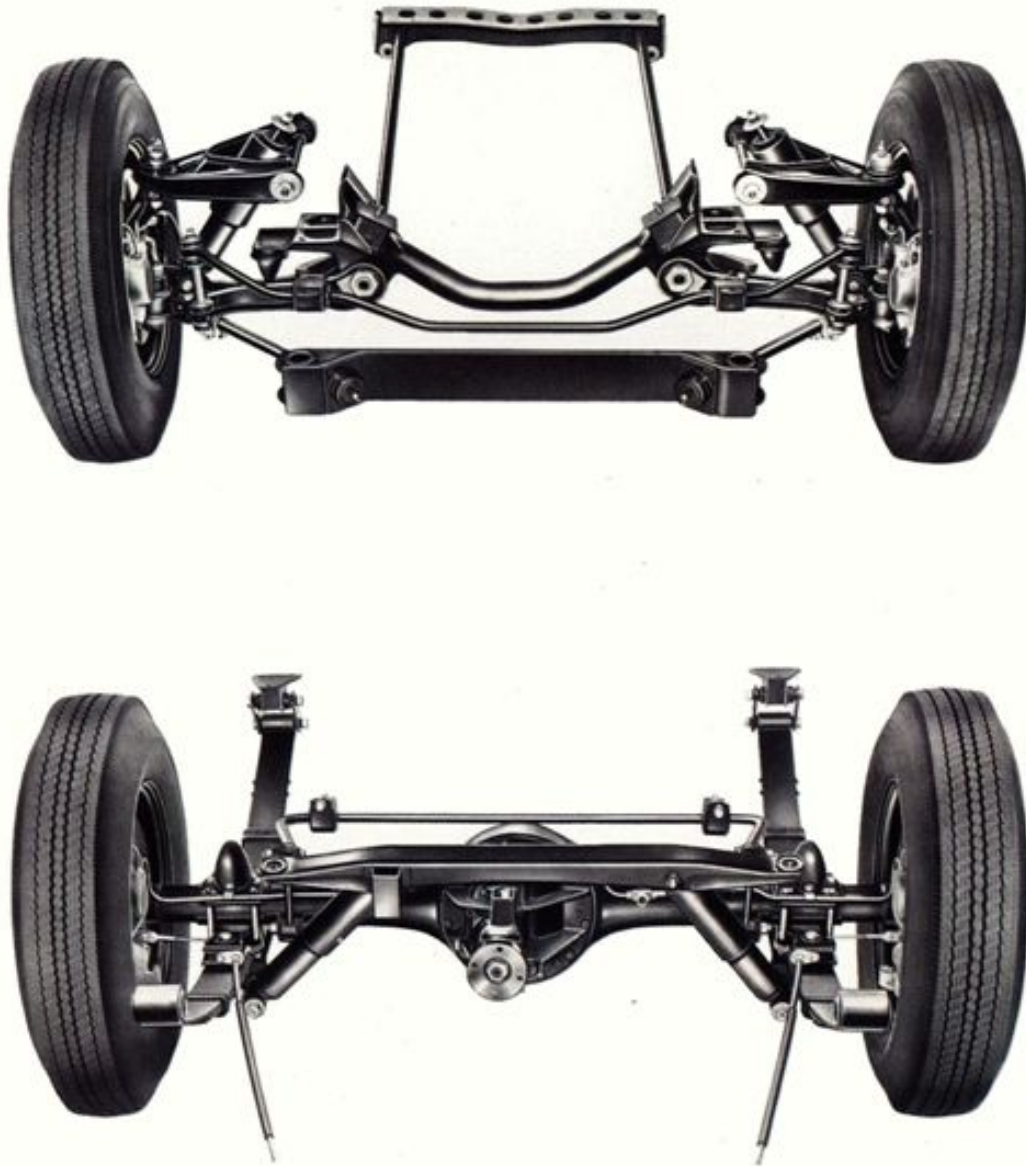
## disc brakes on all four wheels



Disc brakes on all four wheels ensure maximum safety on the road, even at high speeds. A vacuum operated hydro-pneumatic servo-motor reduces pedal pressure to a minimum.

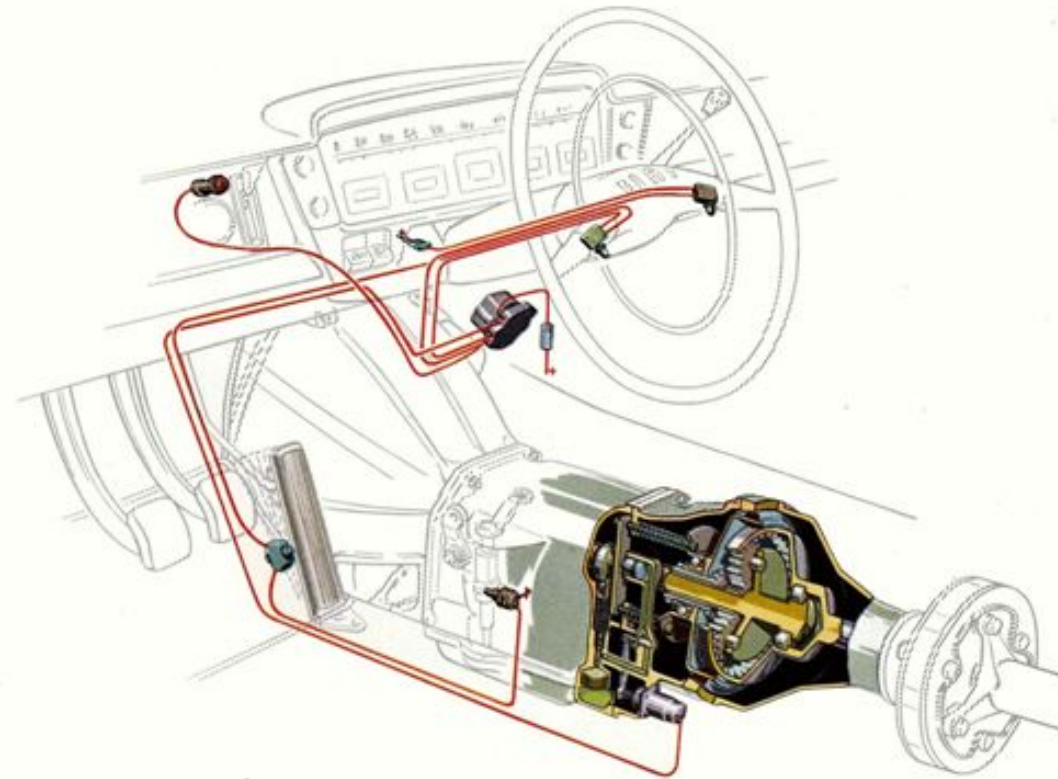


## suspension



Front suspension by torsion bars, wishbones, trailing links, telescopic shock-absorbers, anti-roll bar. Rear suspension is by longitudinal flat leaf springs and an anti-roll bar.

## overdrive



The 2300 can be fitted with an overdrive on request. It reduces engine speed by approximately a quarter and results in quieter running.

The overdrive is engaged and disengaged by two push buttons located on the spokes of the steering wheel. The overdrive is automatically disengaged when selecting third gear and also by pressing the accelerator pedal to the floor.





## the 2300 station wagon

The station wagon version of the 2300 offers increased internal capacity for carrying large items of luggage, sporting equipment and so forth.

With the rear seat and squab folded down a flat floor is provided. Double tail gate allows easy access to the rear compartment.

The estate car has the same mechanical specification, the same elegant lines and the same equipment as the saloon.



## the 2300 special saloon

This special version of the 2300 offers improved accommodation and even more luxurious internal and external finish.

The mechanical specification is identical with that of the standard saloon but the wheelbase is extended by  $3\frac{1}{8}$  ins. (8 cm). This has made possible a particularly spacious rear passenger compartment. The bucket type front seats are equipped with fully adjustable squabs.

A fine car which lends itself to ceremonial and similar occasions.

Overdrive is available as an optional extra.





## the 1800 B saloon

The **1800 B** is an improved version of the 1800. In common with the 2300 it is equipped with servo-assisted disc brakes on all four wheels, longitudinal leaf spring rear suspension and thermostatically controlled cooling fan.

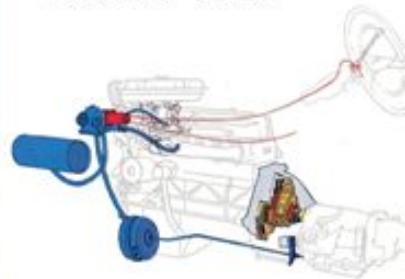
The power output is 97 b.h.p. (SAE). Speed over 90 m.p.h. (over 145 km p.h.). The interior of the vehicle has been improved: the same lavish equipment as the 2300 and more room for rear passengers.

On request, the **1800 B** can be fitted with an automatic clutch.

The **1800 B** is available in saloon and station wagon versions.



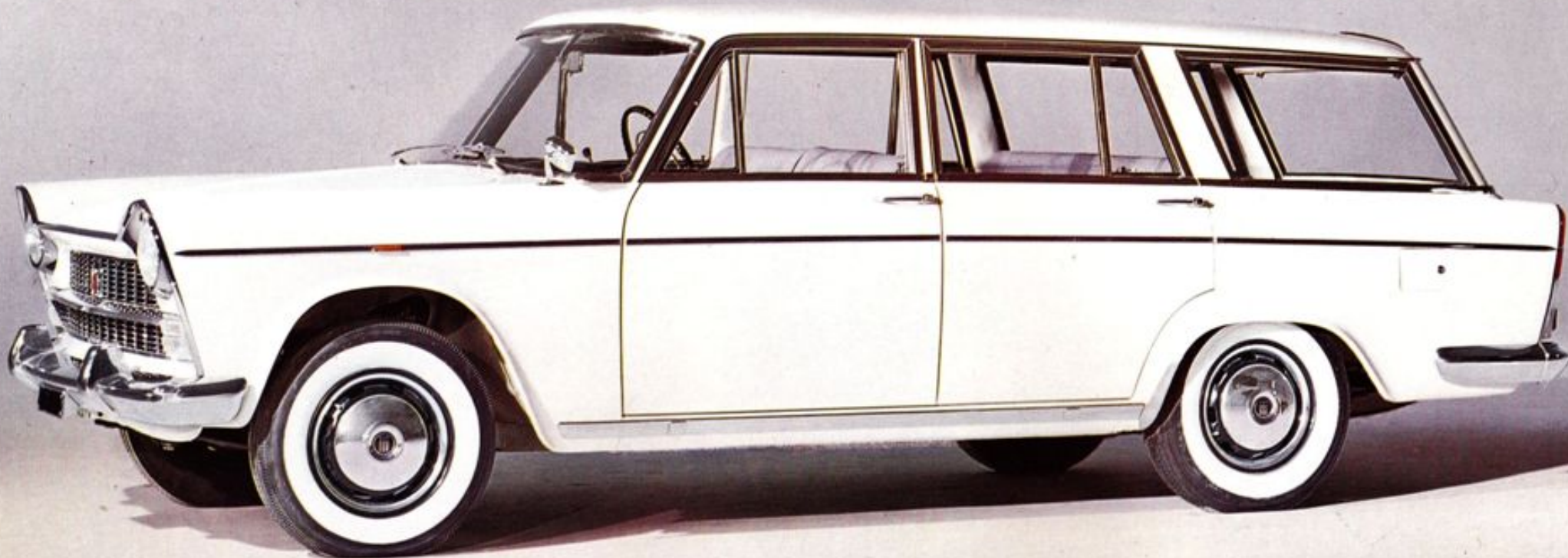
### automatic clutch



On the 1800 B an automatic clutch can be supplied on request: this eliminates the clutch pedal and simplifies gear changing which still remains under the control of the driver, who may select gears according to his individual style of driving.







## the 1800 B station wagon

The 1800 B Station Wagon incorporates the same mechanical improvements and equipment as the saloon. By lowering the floor level by  $4\frac{3}{8}$  ins. (12 cm) increased carrying capacity is available when the rear seat and squab are folded down.





## Fiat 2300

**Integral construction:** Wheelbase 2.65 m. (104-15/16"). Front track 1.345 m. (abt. 53"), rear track 1.307 m. (51-29/64").

**Engine:** 6 cylinders.

**Displacement 2279 c.c. (139.06 cu.ins.) - 117 h.p. (SAE).** Bore 78 mm. (3.07"), stroke 79.5 mm. (3.13"). Compression ratio 8.8 to 1. Cylinder block with cast iron crankcase. Aluminium cylinder head. Counterbalanced, four-bearing crankshaft. Overhead valves. Dual barrel downdraught carburetor. Air intake with silencer and cleaner. Mechanical pump fuel feed to carburetor. Forced lubrication by gear pump. Centrifugal oil filter and supplementary cartridge by-pass filter. Cooling water circulated by centrifugal pump. Electromagnetic radiator fan, with engagement controlled by thermostatic switch. Starter motor engaged by electromagnet. Power plant suspension on rubber pads.

**Clutch,** single plate, dry, hydraulically operated.

**Gearbox** with 4 forward speeds and reverse. Free ring synchronizers for engagement of 1st, 2nd, 3rd and 4th gears. Gear lever under steering wheel.

**Propeller shaft** in two sections with central rubber-mounted bearing, universal joints on rear section and flexible rubber joint on front section.

**Rear axle** with hypoid final drive gears, ratio 10/43.

**Front suspension** by torsion bars and wishbones; trailing links, hydraulic shock absorbers, anti-roll bar.

**Rear suspension** by leaf springs and hydraulic shock absorbers. Anti-roll bar.

**Steering** by worm and roller.

**Brakes,** disc type on all 4 wheels with vacuum servobrake; pressure regulator on rear wheels. Emergency and parking brake acting on rear wheel brake discs.

**Fuel tank** at rear. Capacity 60 liters (13 Imp. - 16 U.S. gallons).

**Disc wheels** with 4 1/2 J rims and 6.40 S-14 tyres.

**Electrical equipment,** 12 Volts, 400 Watt generator, 40 amp/h battery.

**Lamps:** dual headlights with asymmetric low beams.

**Spray windscreen washer,** pedal operated together with the windscreen wiper.

**Speed:** 160 km/h (about 100 m.p.h.).

**Optional extra:** overdrive for 2300 Model cars (Saloon - Station Wagon - Special Saloon).

## differing details

### Fiat 2300 Station Wagon

**Bodywork:** 5th rear door.

**Rear seat and backsquab:** fold away type, 6 side windows.

### Fiat 2300 Special Saloon

**Wheelbase** 2.73 m. (abt. 107-1/2").

**Front seats:** bucket type.

**Fan** for defrosting the rear window.

**Optional extra:** electrical window regulator.

### Fiat 1800 B

**Engine,** displacement 1795 c.c. (109.53 cu.ins.) 97 h.p. (SAE). Bore 72 mm. (2.83"), stroke 73.5 mm. (2.89").

**Tyres:** 5.90 S-14.

**Headlights:** with asymmetric low beam.

**Speed:** over 145 km/h (over 90 m.p.h.).

**Optional extra:** automatic clutch.

### Fiat 1800 B Station Wagon

**Hypoid final drive:** 8/37.

**Headlights:** with asymmetric low beam.

**Optional extra:** automatic clutch.



