



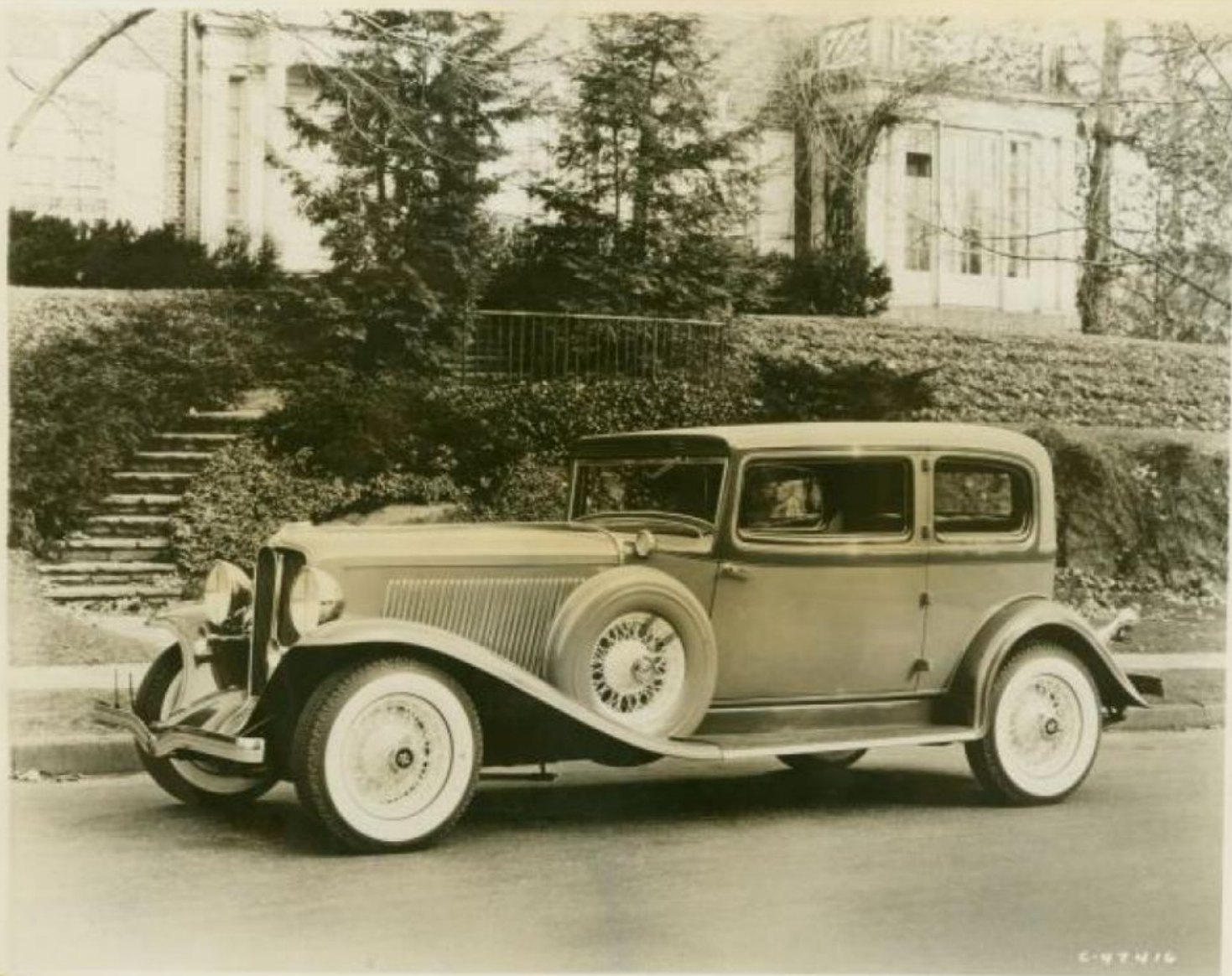
P- 49100

Head-on view of the new Auburn 12-165 series showing individual and grill treatment of the radiator and the propeller type bumper.



B-49100

Side view of the new 5-passenger 12-165 Auburn Salon Sedan. An unusually luxurious and distinctive automobile. Powered with 12-cylinder 160-horsepower Lycoming engine, similar to the world famous engine which broke all speed records at Muroc Dry Lake from one to 500 miles recently. This distinctive car is built on 133-inch wheelbase, and contains such features as: Dual Ratio, new type "X-plus-A" chassis frame, improved L.G.S. free wheeling, silent and constant mesh transmission gears, air cushioned and rubber engine mounting. Note the distinctive treatment of this car throughout. Interiors are richly done in the finest broadcloth and specially designed hardware. Chrome plays an important part in the eye appeal of the car, being lavishly used throughout. Bodies are custom type, retaining the Auburn identity, yet individual in design. Speed in excess of any stock car.



1935. Auburn's 12-161A 2-door 5-passenger Brougham. The flexibility of the Lycoming 160-horsepower 12-cylinder engine, combined with Dual Ratio makes this car the outstanding performer in the industry. Built in 133-inch wheelbase with body swung low and designed with long racy lines, this big roomy automobile dominates the road. IT WILL ACCELERATE FASTER, RUN FASTER, CLIMB HILLS FASTER THAN ANY OTHER STOCK AUTOMOBILE THAT HAS EVER BEEN PRODUCED. This car holds all speed records for from 1 to 500 miles. In addition, it has such features as: silent and constant mesh helical cut gear transmission, L.G.S. free wheeling, ride control, hydraulic shock absorbers, four-wheel hydroaolic brakes, Startix, automobile Bijur lubrication, and scores of others.



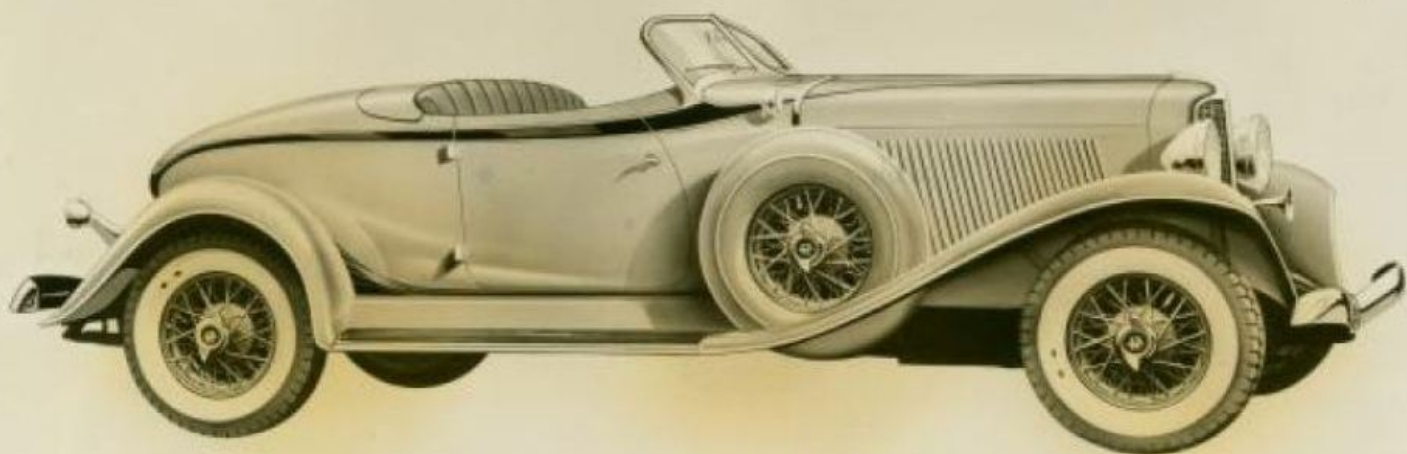
L-49100

Three-quarter rear view of the new Auburn  
12-165 Salon model, 5-passenger Sedan.  
Note the beautifully curved, all-metal  
rear quarters.



43150

1933. Side view of the new 5-passenger 12-165 Auburn Salon Sedan. An unusually luxurious and distinctive automobile. Powered with 12-cylinder 160-horsepower Lycoming engine, similar to the world famous engine which broke all speed records at Muroc Dry Lake from one to 500 miles recently. This distinctive car is built on 133-inch wheelbase, and contains such features as: Dual Ratio, new type "X-plus-A" chassis frame, improved L.G.S. free wheeling, silent and constant mesh transmission gears, air cushioned and rubber engine mounting. Note the distinctive treatment of this car throughout. Interiors are richly done in the finest broadcloth and specially designed hardware. Chrome plays an important part in the eye appeal of the car, being lavishly used throughout. Bodies are custom type, retaining the Auburn identity, yet individual in design. Speed in excess of any stock car.



F-49159

1933. The new 12-165 Auburn Salon Speedster. A most unusual and distinctive automobile. Powered with 12-cylinder 160-horsepower Lycoming engine, similar to the world famous engine which broke all speed records at Muroc Dry Lake from one to 500 miles recently. This distinctive car is built on 133-inch wheelbase, and contains such features as: Dual Ratio, new type "X-plus-A" chassis frame, improved L.G.S. free wheeling, silent and constant mesh transmission gears, air cushioned and rubber engine mounting. Note the distinctive treatment of this car throughout. Interiors are richly done in the finest broadcloth and specially designed hardware. Chrome plays an important part in the eye appeal of the car, being lavishly used throughout. Bodies are custom type, retaining the Auburn identity, yet individual in design. Speed in excess of any stock car.

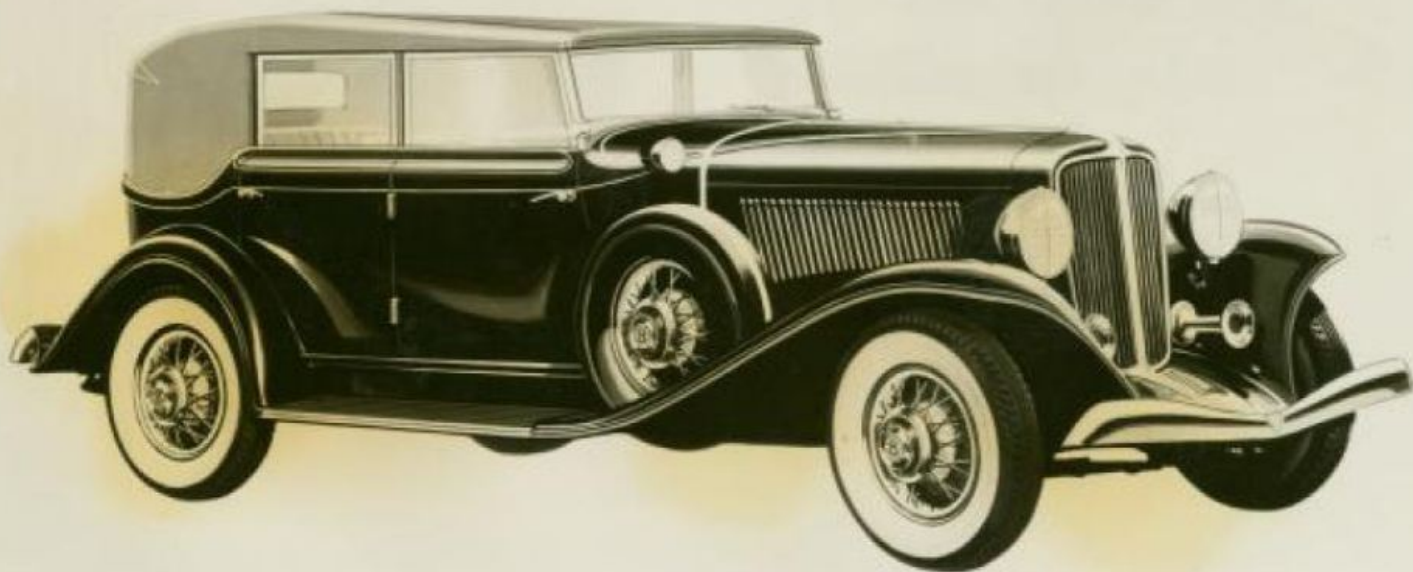


1933. Here is a sport car that attracts immediate attention -- The Auburn 8-101A Cabriolet. The top may be lowered and window glasses left raised if desired. Windshield is hinged. Upholstery is of genuine Spanish leather and top material in a Burbank cloth. Chrome plate has been used lavishly throughout, giving the car additional snap. You will like the quick get-away of this car and its ability to maintain high speeds. It contains such features as: Dual Ratio, L.G.S. simplified free wheeling, silent and constant mesh transmission gears, X-type chassis frame, Startix, Bijur Automatic Chassis lubrication, 2-way hydraulic shock absorbers.



1933. Auburn's 5-passenger Custom Sedan in the 8-101A line. A big, roomy automobile build on 127-inch wheelbase. Powered with 100-horsepower Straight-Eight Lycoming engine and includes such features as: Dual Ratio, L.G.S. simplified free wheeling, silent and constant mesh transmission gears, X-type chassis frame, Startix, Bijur Automatic Chassis lubrication, 2-way hydraulic shock absorbers.





C-43159

1933. Three-quarter front view of Auburn's new 1933 Salon 5-passenger Phaeton Sedan. No skimping, no building to a price on these big, luxurious models. One hundred twenty-seven inch wheelbase. Brand new throughout. V-type windshield, individual radiator design, beautifully curved all-metal rear quarter and rear end treatment. One hundred horsepower, Straight-Eight Lycoming engine coupled with Dual Ratio gives this car performance qualities that are unusual. Contains such features as Dual Ratio, new type "X-plus-A" chassis frame, silent and constant mesh transmission, L.G.S. improved free wheeling, Startix, 4-point rubber air cushioned engine mounting, automatic chassis lubrication, automatic hydraulic shock absorbers, 4-wheel hydraulic brakes.