



# 1964 ACADIAN

- BEAUMONT SPORT DELUXE
- BEAUMONT CUSTOM
- BEAUMONT
- CANSO
- INVADER

## BEAUMONT SPORT DELUXE SERIES

**Beaumont Sport Deluxe Convertible** in Goldwood Yellow. *All-new and beautiful, too!* Here's the car that can set you to doing handstands, whether you're fifteen or fifty. It's *that* kind of exciting new car! Its style is exceptionally beautiful (as you can readily see). Once inside, you'll discover brand new luxury and king-size dimensions. There are bucket seats up front upholstered in leather-grained vinyl. Carpets wall-to-wall. 3 conveniently placed ashtrays. A rear seat courtesy light—and an electric clock, too! Have you thought of *everything* in this new Acadian? We have. Right up to a new top that's *extra* easy to operate, snug and weatherproof when it's up.



An important part of the all-new Acadian Beaumont's distinctive styling is its twin headlight arrangement. Set in gleaming metal, they blend perfectly with the Beaumont's clean-lined grille.



Order Powerglide® automatic or a 4-speed transmission\* and you get a sporty centre console between the front bucket seats. The shift lever is placed for smooth changes every time.

\*optional at extra cost.



Beaumont Sport Deluxe models have luxurious bucket seats as standard equipment. Foam-cushioned for full and comfortable support they add a special note of sportiness to the interior.

**Beaumont Sport Deluxe Sport Coupe** in Tuxedo Black. *Full of more happy surprises than a Christmas stocking!* Pardon our enthusiasm, please, but when a new car's *this* beautiful it's easy to go overboard! You will too, we'll wager, once you've made acquaintance with this all-new Sport Coupe. It has *everything* you want, built in. Things like lots of living room . . . six can stretch without getting in each other's way! The all-vinyl interiors are trim, tailored and tasteful, coming in your choice of six handsome colors. The thoughtful selection of appointments includes full carpeting, dual sunshades, an electric clock and a beautifully organized instrument panel that's recessed for safety.



BEAUMONT SPORT DELUXE SPORT COUPE INTERIOR IN FAWN.  
This series also available in Aqua, Red, Blue, Black and Saddle.



Beaumont Sport Deluxe models wear a superbly simple rear end styling. Bright metal moulding extends full width. Taillights are set in sparkling anti-rust metal.



Beaumont Sport Deluxe models are beautiful right down to the standard wheel discs shown. Note the three smart spokes radiating out to create an arresting effect.



A deep-dished, dual-spoke steering wheel is standard on every Acadian Beaumont. In two-tone color effect on Sport Deluxe and Custom models. Acadian emblem on hub.

## BEAUMONT CUSTOM SERIES

**Beaumont Custom Convertible** in Ember Red. *Rakish, roomy and really new!* Bent on fun and soaking up the sun? There's no smarter way to pursue the two! And without sacrificing an ounce of comfort on route! Slip into this neat, new Acadian and you'll find the following:

a tight-fitting top; deep-twist carpeting; easy-care, all-vinyl interiors . . . in five fashionable colors; armrests and ashtrays front and rear; cigarette lighter in front and—luxury touch—an electric clock! *How about that room?* That's exactly what you'll be saying!



This stylish Acadian hood emblem tells the world you're driving the best looking car in this class. Behind the emblem a metal moulding provides a decorative touch to the hood-dividing windsplit.



Slim windshield pillars provide better visibility for the Acadian Beaumont driver. Slightly curved, they follow the new curving of the side windows. It's another distinctive style touch of the 1964 Beaumonts.



Styled for greater distinction, these optional-at-extra-cost wheel discs are well worth the modest price. They enhance the overall appearance of your Beaumont, give it an extra elegance.



BEAUMONT CUSTOM SPORT COUPE INTERIOR IN AQUA.  
This series also available in Fawn, Red, Blue and Saddle.

**Beaumont Custom Sport Coupe** in Lagoon Aqua. *Fresh new beauty that doesn't cost a pretty penny!* Get a crack designer to create a truly outstanding looking car. Make sure it will accommodate six in blissful comfort within the handy measure of a parkable 115" wheelbase. Finally, have him add every conceivable convenience feature. When he's all through, you'll have a good idea of the all-new Acadian Beaumont Custom Sport Coupe's appeal! Vinyl and Pendant cloth interior in five decorator colors, full floor carpeting and an electric clock are just part of this Acadian's luxury features. And all Beaumonts have a *big* heater/defroster as standard equipment, too!



See how the Acadian Beaumont's sleek rear window styling is in complete harmony with the rest of its stylish shape? It's how we planned it, to blend smoothly into the rear deck.



Every Acadian has two big sunshades to fight Winter glare and tame Summer sun, plus an all-vinyl headlining that needs no more attention than a wet cloth once-in-a-while to keep it attractive.



Here's a thoughtful touch from the people who designed the Acadian Beaumont interiors for you—rear armrests with color-keyed vinyl pads are smart and convenient. Ashtrays are also standard!

## BEAUMONT CUSTOM SERIES



**Beaumont Custom 4-Door Sedan** in Silver Blue metallic. *Your friends will be lining up to admire it!* So will the family and anyone else who happens to be in the neighbourhood. But sensational, eye-pleasing style is only part of the exciting news. In common with all

Acadians, it has one of the softest, *quietest* rides six husky passengers could ever imagine! Four generously-sized coil springs are ably abetted by flexible shock absorbers front and rear . . . s-m-o-o-t-h- going is the order of the day, everyday!



You control the amount of clean, fresh air you want inside with your Acadian's friction-type ventipanes. A quick adjustment and you can close out rain, snow and dust.



Open either front door of your Acadian Beaumont and instantly and automatically you have the bright illumination of an overhead dome light. A real must for after dark.



Power windows are an extra cost option you can have on any Acadian. Simply press a button and the windows move up or down electrically. Driver has a master control.



**Beaumont Custom 9-passenger Station Wagon** in Desert Beige. *Fishing, fetching or doing any chore, this one's tops! No Station Wagon's smarter, that's for sure! Or more practical . . . with a super-sized cargo area that takes 86 cubic feet of what-have-you. Unfold the rear-facing seat and you can take 9 passengers along. Tailgate window is power operated from front seat. Durable all-vinyl interior and sidewalls, carpeted floor in passenger area.*



**Beaumont Custom 6-passenger Station Wagon** in Palomar Red. *Designed to do double duty . . . beautifully! This Acadian's a rugged load-hauler boasting 86 cu. ft. of cargo area when the back seat is folded flat.*

Flip up the back seat and you're ready to go socializing with a party of six! An all-vinyl interior, passenger floor carpeting, 4 armrests, 3 ashtrays, an electric clock, and a cigarette lighter are all standard.



Look at the cavernous capacity of the Beaumont Custom 6-passenger Station Wagon. With back seat folded you can load 86 cubic feet of cargo through the big, wide rear opening. Vinyl-coated textured metal on the folding seat-back and tailgate stands up to the roughest handling.



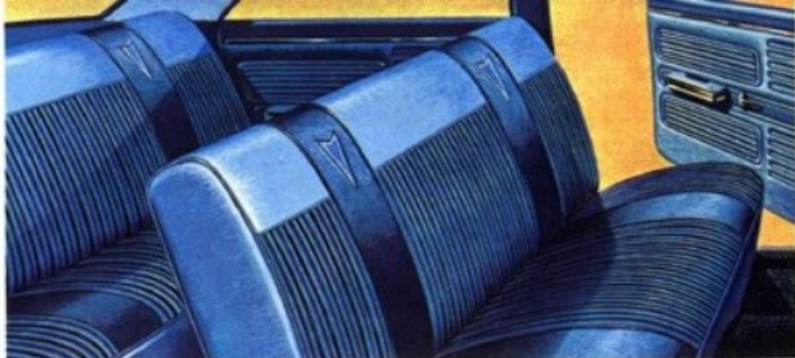
An option you're almost sure to want is a radio, and Acadian offers a choice of two. One's push-button, the other is manually operated. Both are fully transistorized, available at extra cost.



A power-operated tailgate window is mighty handy, particularly when it's controlled from the driver's seat with the flick of a switch. Standard on the 9-passenger Beaumont Custom Wagon, optional-at-extra-cost on others.

## BEAUMONT SERIES

**Beaumont 4-Door Sedan** in Diplomat Blue metallic. *Dashing! Delightful! Decidedly new!* Come on inside! Those door openings are big and wide. The interior luxury creates a completely new charm. But then, what else would you expect when a car's this stylish outside? Yes, it's ideal for the family . . . with room galore for relaxing in? Plus 21.4 cu. ft. of trunk space . . . and appointments that include ashtrays, front and rear armrests, dual sunshades and colorful, easily-cared-for interiors of patterned cloth and vinyl.



BEAUMONT 4-DOOR SEDAN INTERIOR IN BLUE.  
This series also available in Fawn, Aqua, and Red.



Acadian supplies you with a really super-sized glovebox. And lockable, too, for extra security. Automatic glovebox light is also standard on the Sport Deluxe and Custom models.



Acadian's powerful Heater warms front and back compartments with ease. Equally instantaneous is the way the Defroster starts melting ice and snow. In hot weather, you can enjoy a cool air flow.



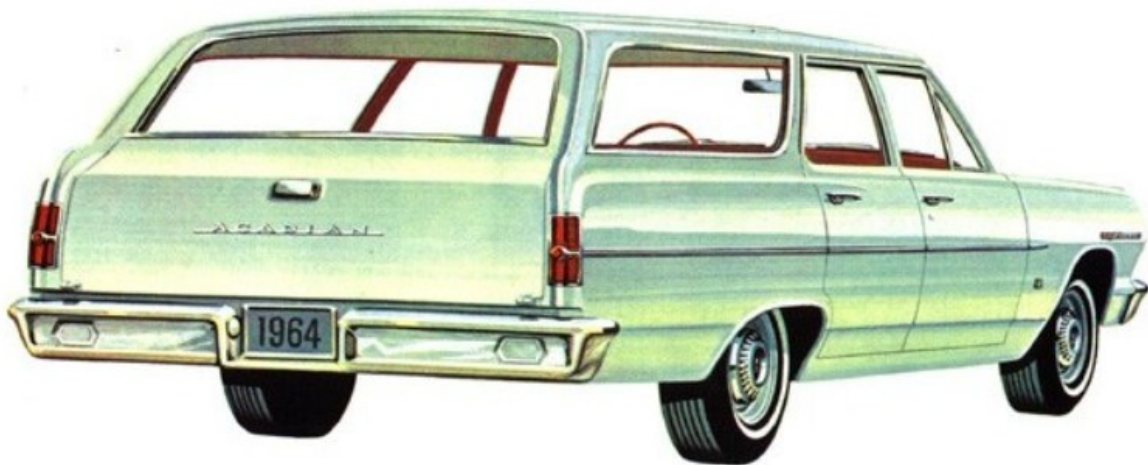
Large, specially-styled Station Wagon taillights are designed so that they can be seen from the side as well as from the rear. The circle reflector is an extra safety feature.





**Beaumont 2-Door Sedan** in Bahama Green. *Glamour and luxury that's unusually easy to come by!* No, there's no mistake. This is the easiest of all Beaumonts to own. The beautiful style certainly gives no clue to its modest price. Nor, when you move inside, does the

lavish interior. And when you've totalled up all the standard equipment, you'll probably have to pinch yourself before you'll believe the low price. But that's Acadian for you, laying solid value on the line . . . time after time.



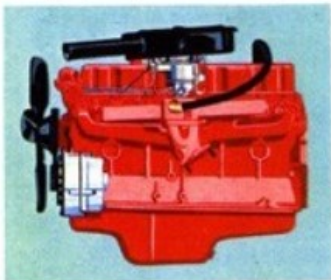
**Beaumont 4-Door, 6-passenger Station Wagon** in Satin Silver. *Smartest way to save on everything but load space!* Take along the gang, the gear and still have room to spare in this stylish Station Wagon. Loading is extra easy! Rear opening is 55.3" wide, 28.5" high . . . conveniently low too; 20" from the ground to the top of the lowered tailgate. Roll-down rear window is manually operated, the power-operated window is a modestly-priced option. What else? Your choice of four interior colors in an eye-appealing combination of patterned cloth and leather-grain vinyl.

# THE '64 ACADIAN BEAUMONT SERIES' ENGINEERING STORY

**NEW CHASSIS, NEW POWER TRAINS PROVIDE IMPROVED RIDE, EXCELLENT HANDLING, AND MORE SATISFYING PERFORMANCE.**

The Acadian Beaumont has every performance and durability feature you want. You'll get an improved ride, longer car life as a result of the newly designed chassis. Full coil spring suspension and a separate

frame structure make riding smooth. Large brakes assure safe, sure stopping. Power? There are 4 engines to choose from plus 3 transmissions for 10 power-train combinations. (see chart bottom left)



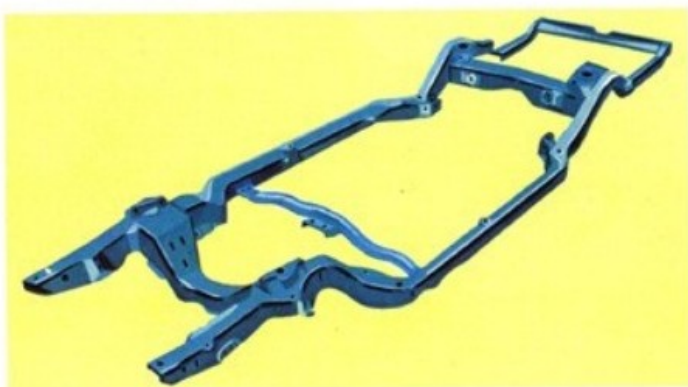
**THRIFTY ECONOFLAME 6.** Beaumont's peppy, economical, 120-hp Econoflame 6 goes great on regular gas. A 7-main-bearing crankshaft, hydraulic valve lifters, down-draft carburetor and over-square design account for its ultra-smooth, quiet running. Delcotron generator keeps battery charging even when engine is idling. Automatic choke is standard. Compression ratio—8.5:1. Displacement—194 cubic inches. A brand-new engine is also available as an option at extra cost. It is the 155-hp, 230-cu.-in. 6 cylinder.

**POWERFUL ECONOFLAME V8.** 195-hp engine runs on regular fuel, breathes



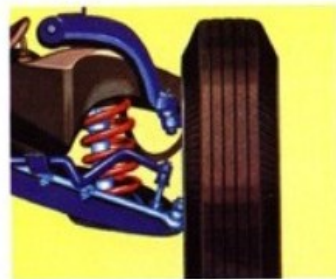
better with higher lift camshaft that opens intake and exhaust valves farther, gives greater flow of fuel-air mixture to the combustion chambers. Two-barrel carburetor, full-pressure lubrication, displacement—283 cubic inches, compression ratio 9.25:1, dry-element air cleaner, damper springs in valves.

**SUPER ECONOFLAME V8.** Puts out 220-hp. A four-barrel carburetor and corresponding inlet manifold replace regular production components in standard V8. Larger dual exhaust system. Compression ratio 9.25:1. Displacement 283 cubic inches. Optional at extra cost.

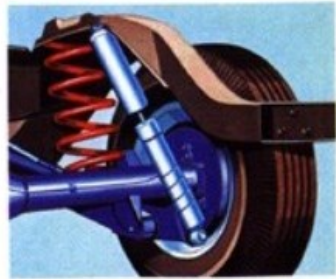


**ALL-NEW, ALL-WELDED STEEL FRAMES.** There's improved riding qualities, better passenger compartment insulation, and more versatility since there are 4 frames engineered exactly to support the size and

weight of Beaumont's 4 models—sedan, coupe, station wagon, convertible. Frames are of all welded steel construction, similar in shape but different in metal gauge, size and parts.



**BEAUMONT FRONT SUSPENSION—**sturdy coil springs combine with double-acting shock absorbers to provide you with a super-smooth ride. Front stabilizer bar gives you the needed leveling action when you turn into corners and curves. Another plus—coil springs are built to last. They don't squeak. You ride pleasantly, relaxed and quietly over the roughest roads when you let Beaumont's front coils take out the jolts.



**BEAUMONT REAR SUSPENSION—**here again, tough coil springs make a comfort-cushion between you and the road. They're coupled with double-acting shock absorbers to give you even greater riding ease. Acadian Beaumont rear suspension is quiet, engineered to give a more even ride on any surface. It's strong, safe and durable to stand up under every driving condition. And it assures precise, positive handling.

**ACADIAN BEAUMONT SERIES POWER TEAMS**

ENGINE	TRANSMISSION	REAR AXLE RATIO**	
		GENERAL PURPOSE	SPECIAL PURPOSE OR MOUNTAIN
120-hp Econoflame 194 6-cylinder	3-Speed	3.08:1***	3.36:1
	Powerglide*		
155-hp Econoflame 230* 6-cylinder	3-Speed	3.08:1***	3.36:1
	Powerglide*		
195-hp Econoflame 283* V8	3-Speed	3.08:1	3.36:1
	Powerglide*		N.A.
	4-Speed		N.A.
220-hp Super Econoflame 283* V8	3-Speed	3.08:1	3.36:1
	Powerglide*		N.A.
	4-Speed*		N.A.

\* optional at extra cost  
\*\* also available in Posttraction

\*\*\* 3.36:1 for Station Wagons  
N.A. Not available

# ACADIAN BEAUMONT SPECIFICATIONS

**BODY**—High-Level cowl ventilation through dual vents in front compartment kick panels (individual knob controls for each); push-button outside door handles; rearview mirror; enclosed steering column, rheostat-controlled light instrument cluster including dial speedometer, odometer and fuel gauge, plus oil pressure, engine temperature and generator indicator lights; 5-position ignition switch (Accessory, Lock, On, Off, Start), directional signal indicators, ashtrays, radio speaker grille (in top of instrument panel), glove box with lock. Rear deck lid, hood and wagon tailgate are counterbalanced. Extra-heavy pillars and roof rails, reinforced floor, double-walled front structure and water-washed, air-dried rocker panels, Zinc-O-Bond Rust Protection, electric parallel-acting windshield wipers, safety belt attachment provision, Magic-Mirror finish in 14 exterior colors and 11 two-tone combinations, (15 exterior colors for Beaumont Sport Deluxe series).

## ENGINES

**120-HP ECONOFLAME 194**—this economical 6 is loaded with power... short-stroke design gives better efficiency. Single-barrel carburetor with automatic choke runs engine on regular fuel. Hydraulic valve lifters; 7-bearing crankshaft; 194-cu.-in. displacement; compression ratio 8.5:1, dry element air cleaner; full-flow oil filter.

**155-HP ECONOFLAME\* 230 6-CYLINDER**—really goes on regular gas. Thin-walled construction for high power-to-weight ratio. Short-stroke design. Compression ratio 8.5:1, 7 main-bearing crankshaft; full-pressure lubrication; displacement 230 cu. in.; single-barrel carburetor; full-flow oil filter.

**195-HP ECONOFLAME 283—V8** power that gives you top performance on regular grade gas. Hydraulic valve lifters. Compression ratio 9.25:1; displacement 283 cu. in.; two-barrel carburetor; dry-element air cleaner.

**220-HP ECONOFLAME 283 V8\***—Modified version of Beaumont's standard V8 offers exceptional performance. Four-barrel carburetor; twin exhaust system.

## TRANSMISSIONS

**3-SPEED SYNCHRO-MESH**—standard on all Beaumonts. Smooth and dependable with new gear design for easy shifting.

**POWERGLIDE\***—The ultimate in automatic shifting. Efficient two-speed three-element torque converter with planetary gears. Positive parking lock. New version of

Powerglide (available on Sport Deluxe) features floor-mounted selector stick with straight-line shift pattern. Spring loaded button on shift knob guards against accidental shifts.

**4-SPEED SYNCHRO-MESH\***—for sports car manoeuvrability. All forward gears fully synchronized. New fingertip lock-out on floor-mounted shift lever prevents wrong shifts. 4-Speed Synchro-Mesh available only with V8 engines.

**CHASSIS**—Clutch: Diaphragm spring type. Single dry disc with two facings, spring-cushioned, sealed-in lubricant for release bearing. 9.12" diameter disc with 120-hp EconoFlame 194 engine, 10.0" with 195-hp EconoFlame 283 and 3-Speed Synchro-Mesh. 10.4" with 195-hp EconoFlame 283 and 4-Speed Synchro-Mesh. Wheels and tires: 14" wheels, 6.50 x 14" blackwall tubeless tires on all models except Station Wagons: 7.00 x 14" on Station Wagons. Steering: Precision Ball-Race gear, overall ratio 26.2:1. Electrical: 12-volt system; 9- to 37-ampere capacity. Delcotron charging circuit. (Optional Delcotron units of 12- to 42-, 5- to 55- and 23- to 62-ampere capacity available. \*\*) Battery: 54 plates; capacity rating, 53 ampere hours.

**SUSPENSION**—Strong coil at each wheel works with double acting shock absorber to cushion the ride. Front stabilizer bar provides built-in leveling action.

**DIMENSIONS**—Wheelbase, 115"; overall length of Station Wagons, 198.8", all other models 193.9"; height, Sedans, 54.5", Station Wagons, 54.9", Sport Coupe and Convertible, 54.0"; wheel tread, front and rear, 58", width, 74.6".

**SELF-ADJUSTING SAFETY-MASTER BRAKES**—Brakes adjust automatically to compensate for normal lining wear. Automatic mechanism makes adjustment. Thick-bonded brake linings; air-cooling stops fade.

**LONG-LIFE EXHAUST SYSTEM**—Beaumont mufflers are completely aluminized to resist against internal and external corrosion—longer life.

**DELCO TRON GENERATOR**—Delcotron diode-rectified generator delivers current at low engine speeds, charges even at idle... quick starts, extended battery life.

**BLENDED-AIR HEATER**—Heater evenly distributes large volumes of heat throughout the car. Blanket-type defrosters clear windshield fast.

**LUBRICATION**—Long interval oil change and improved chassis lubrication means lower running costs.

**BODY-BY-FISHER**—Superb quality and attention to detail are standard in every Body-by-Fisher. Roof sides and floor are welded together, form a strong single unit. Vibration-absorbing rubber body mounts at strategic locations isolate road shock. Acoustic insulation throughout. Extensive rust and corrosion protection.

## BEAUMONT STANDARD FEATURES

Tasteful trim and identification, deep-dish, dual-spoke steering wheel with half-circle horn ring, foam-cushioned front and rear seats, front and rear armrests with ashtrays included in the rear armrests, twin and adjustable sun shades, glove-compartment lock, cigarette lighter, centre dome light with instrument panel switch. Distinctive color-keyed pattern cloth and vinyl seat upholstery plus vinyl headlinings and vinyl-coated rubber floor mats are offered in all Beaumont sedans and station wagons. Interior colors are fawn, aqua, red and blue.

## BEAUMONT CUSTOM ADDITIONAL FEATURES

Electric clock in dash. Distinguished trim and identification. Two-tone steering wheel. Interior color selection of fawn, aqua, red, blue and saddle. Convertible and Station Wagons have all-vinyl interiors. Floor covering is deep-twist carpet.

## BEAUMONT SPORT DELUXE ADDITIONAL FEATURES

Deluxe identification and trim. Six interior colors—fawn, aqua, red, blue, black and saddle; front bucket seats with ribbed leather-grain vinyl flanked by smooth side bolsters plus inner and outer metal moldings. (With Powerglide automatic and 4-Speed Synchro-Mesh transmissions, a between-the-seat console and floor-mounted transmission shift lever is standard).

## OPTIONAL EQUIPMENT\*

Air conditioning system; 4-way power seat; power windows; power operated folding top for Convertibles; Station Wagon split second seat; seat belts; simulated wire wheel covers; vented full-wheel covers; whitewall and oversized tires; 14" wheels; heavy-duty springs and shock absorbers\*\* 3.36:1 and 3.55:1 axle ratios\*\*; Posi-traction rear axle; heavy-duty clutch; heavy-duty radiator; padded instrument panel; heavy-duty battery; two-speed windshield wipers and push-button washers.

\*optional at extra cost

\*\*availability determined by either model or equipment

Beaumont models illustrated in this catalogue are designed and manufactured in Canada by General Motors. Illustrations do not necessarily show standard colors, materials and equipment. General Motors Products of Canada, Limited, reserve the right to make changes at any time, without notice, in prices, colors, materials, equipment, specifications and models, and also to discontinue models. This right may be exercised without incurring any responsibility with regard to cars previously sold.

Whitewall tires and wheel discs illustrated are optional at extra cost on some models.